

NEW SOUTH WALES
29 Liverpool Street
INGLEBURN NSW 2565
T: (02) 9618 6222
F: (02) 9618 6255

QUEENSLAND
Unit 4, 1089 Kingsford Smith Drive,
EAGLE FARM, QLD 4009
T: (07) 3268 4611
F: (07) 3268 5255

1300 138 011
EMAIL
info@ezytube.com.au
WEB
www.ezytube.com.au



EZYTUBE PTY. LTD.
Patent No. 696707 - ABN 83 070 229 104

Ezytube Yellow Formliner™ Data Sheet

The **Yellow Formliner™** product is a revolutionary new innovation which significantly improves the surface finish of off form finished concrete structures.

The **Yellow Formliner™** is simply and easily rolled out over the formwork surface and held in place with staples and adhesive tape. The steel reinforcing is then placed on top of the liner before the concrete is poured.

The **Yellow Formliner™** is suitable for use over conventional formply, panels, tables, and shutters, and is suitable for use to line soffits, beams, walls, lift shafts, underside of balconies, or almost any conceivable use.

The **Yellow Formliner™** is a unique composite material that is robust enough to ensure the rigours of other necessary trades such as steel fixing and concrete placing; has excellent release properties without the need to apply release agents; is not slippery when wet; and is simply and easily installed on site. Cutting on site is quickly performed using a basic hand held utility knife, which makes trimming around complicated shapes such as columns, set downs, corners, radius's a simple task.

The **Yellow Formliner™** is supplied in rolls up to 2400mm wide, and can be supplied in smaller rolls for easy handling (100kg / 144m²), or larger rolls (1800kg / 2,800m²) for more cost effective uses. Custom slitting for both width and length can also be accommodated to suit specific needs.

International Patents are pending for this technology as it is a truly a world first formwork technology.



INTERNATIONAL LEADERS IN CONCRETE COLUMN FORMING

ROUND TUBES | SQUARE TUBES | RECTANGLE TUBES | POLYGONS AND CUSTOM SHAPES | OVAL TUBES | YELLOW FORMLINER™

Typical Properties

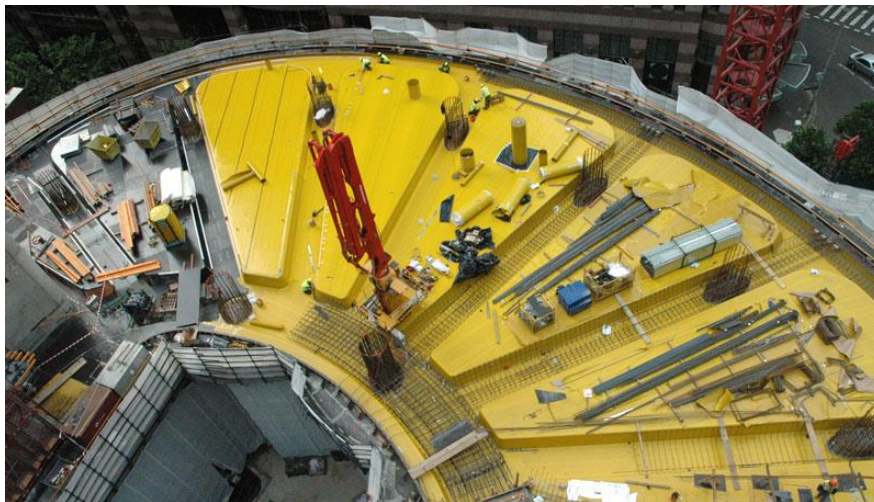
<i>Thickness:</i>	900microns (0.9mm)
<i>Gramage:</i>	695gsm (grams per square meter)
<i>Release agents required:</i>	NIL
<i>Water Resistant:</i>	Both in roll form and once installed
<i>Roll Width:</i>	Maximum 2200mm

Applications

Conventionally formed suspended slabs and beams

Concrete soffits and beams are commonly formed using sheets of formply which are cut to the required dimensions and supported beneath with propping.

Typically, new ply will give the best surface finish on the poured concrete, however for cost reduction purposes the formply is most commonly reused several times. This reuse of the formply results in a gradual deterioration of the surface finish of concrete with successive uses. The Ezytube **Yellow Formliner™** will ensure a constant surface finish irrespective of the number of uses of the form ply. Previously used formply of reasonable condition can generally be used without the need of purchasing costly new form ply.



Panel Systems

Formwork Panels typically consist of a metal frame structure with a ply top facing. Panel systems are typically faster to install than conventional methods however result in an unattractive class 3 or less surface finish.

Traditional methods to improve the surface finish of the concrete would involve sheeting out on top of the panels with new ply. This method is very expensive and labour intensive.

The Ezytube alternative is to simply roll out the Ezytube **Yellow Formliner™** on top of the panels and fix in place with staples and adhesive tape.



Walls

The Ezytube **Yellow Formliner™** is also suitable for use on improving the concrete surface finish on vertical surfaces such as walls, cores for stair wells and lift shafts, bridges, pillars, etc.



Balconies

Balconies often require an improved surface finish on the underside of their slabs, compared to internal slab areas where a plasterboard ceiling would typically be installed which conceals the electrical, lighting and other services, and a lower standard of concrete finish is acceptable.

The Ezytube **Yellow Formliner™** is simple and easily rolled out over the formwork surface to improve the off form concrete surface finish and minimize patching and painting trade costs.



Top Down Construction Technique

The Yellow Form Liner material has been used recently on 3 different projects where a slab on ground was formed, and subsequently excavation works were performed to create separate basement areas and secondary lower slabs by the same process under the initial concrete slab. In both cases, an improved surface finish on the underside of the slab was required. An intermediate sacrificial layer was applied over the levelled ground (50mm thick high density Polystyrene on one project; 80mm thick cement blinding screed on the second project) and then the Yellow Formliner was installed on top of the sacrificial layer.

The Steel Reinforcing was then installed on top of the Yellow Formliner, and then the concrete poured.

Further to excavation of the soil beneath the slab, the surface finish of the underside of the stripped concrete slab had a significantly improved surface finish when compared to alternative methods previously used without the Yellow Formliner.



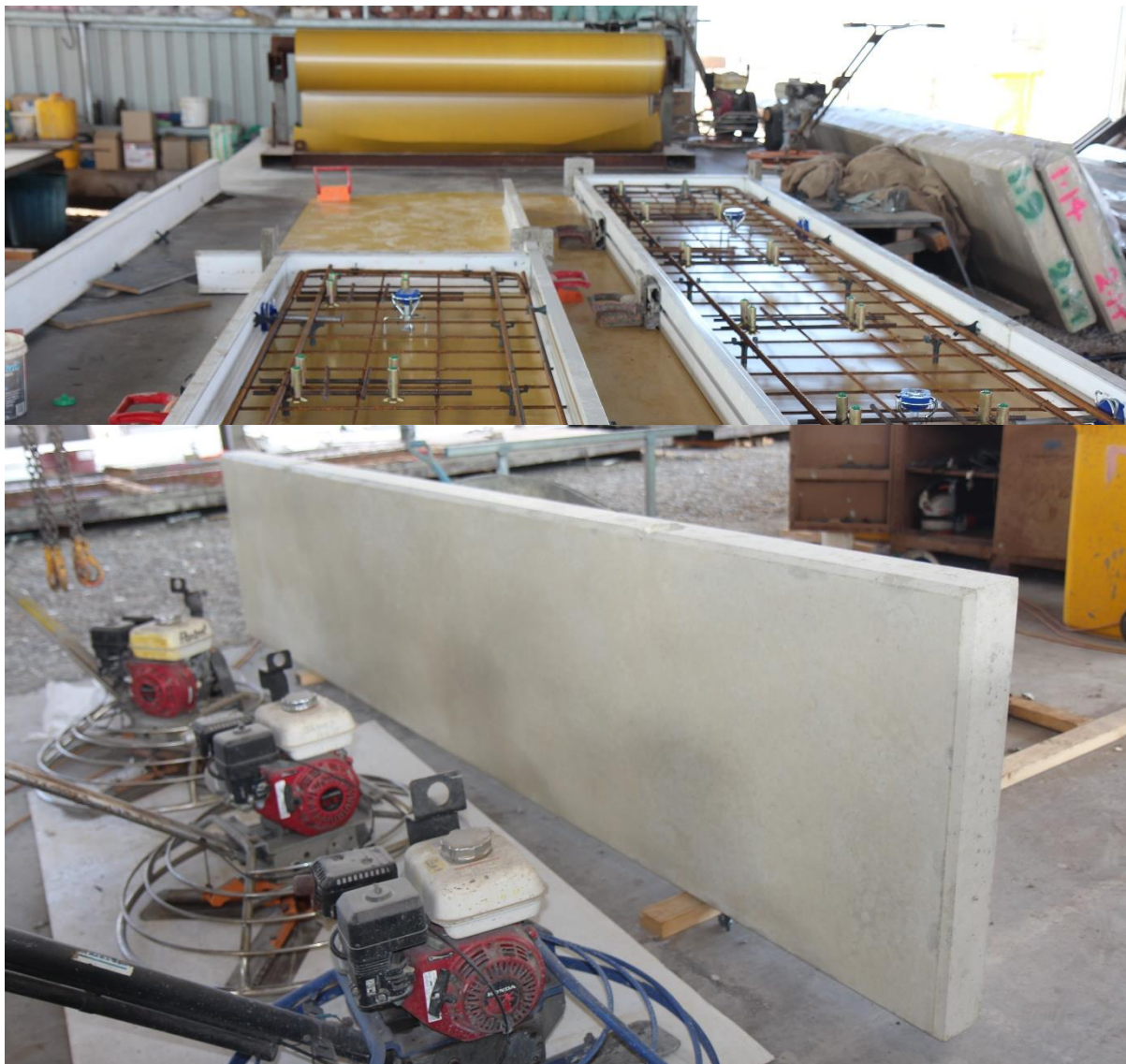


PreCast

The **Yellow Formliner™** is an extremely versatile material when used to improve the surface finish of precast concrete panels/products.

The **Yellow Formliner™** is simply rolled out over the base surface of the form and held flat by the edgeboards of the form.

Alternatively, the **Yellow Formliner™** is easily scored/bent to allow for an effective seat at junctions between horizontal and vertical faces/corners.



The **Yellow Formliner™** is also easily cut with a hand held knife to allow for any penetrations.

No release agents are required to be applied to ensure an effective release after the concrete pour.

Installation Guidelines for improved results:

- Ensure that the surface to which the formliner is to be applied is clean of all debris prior to installing the Yellow Formliner™.
- Tape all exposed edges of the Formliner™ to prevent rain/ wind carrying debris under the formliner and between the substrate, and also to prevent concrete flowing between the formliner and the ply.
- Debris between the formliner and the substrate will result in inferior surface finish on the concrete.
- When drilling through ply which is lined with the Yellow Formliner™, ensure that the debris does not become trapped between the liner and the ply as this will result in surface imperfections.
- When stapling / fixing / adhering the formliner, ensure that the formliner is completely flat and that no “lufting” is evident in the liner. (will result in a crease when concrete is installed)
- The Yellow Formliner is generally very hard wearing, however impacts from Steel Reo, Bar chairs, may scratch or damage the liner which may result in surface imperfections.
- For superior surface finish results, it is recommended that the concrete is poured onto a pour plate, or onto wet concrete and dispersed rather than dropping / directing the flowing concrete directly at the form liner.
- Both sides of the Yellow Formliner™ consist of the same materials, however being supplied in a roll form it has been found easier to lay the formliner with the inside (roll core side) facing in an upwards direction.
- When bending the formliner, a much straighter bend can be achieved by scoring the opposite side of the liner with a knife (and straight edge is also suggested)
- It is strongly recommended that a trial pour is performed prior to installing an off-form installation as different concrete mixtures, and different pour methods can result in significantly different surface finishes.

